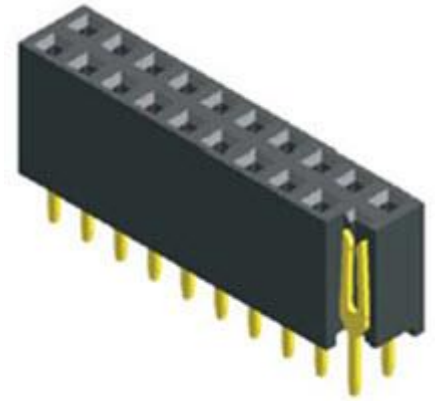


SSH2000-XX, Dual row socket header, 2.54 mm pitch

Features

Mechanical Properties

Parameter:	Description
Connector Type:	Dual row socket Header
Dimensions:	(2.54 x number of positions) x 5.0 x 11.65 mm ± 0.25
Operating Temperature Range:	-65°C~+125°C
Pitch:	2.54 mm
Number of contacts: (Available options)	02 ~ 80
Contact Material:	Brass
Contact Plating:	Gold plating
Insulator Material:	PBT, UL 94V-0 Black



Typical applications

- Wire to Board
- Board to Wire
- Board to Board

Electrical Properties

Parameter:	Description
Current Rating:	3.0 A
Insulation Resistance:	5000 MΩ min.
Contact Resistance:	20 mΩ max.
Withstand Voltage:	500V AC/DC

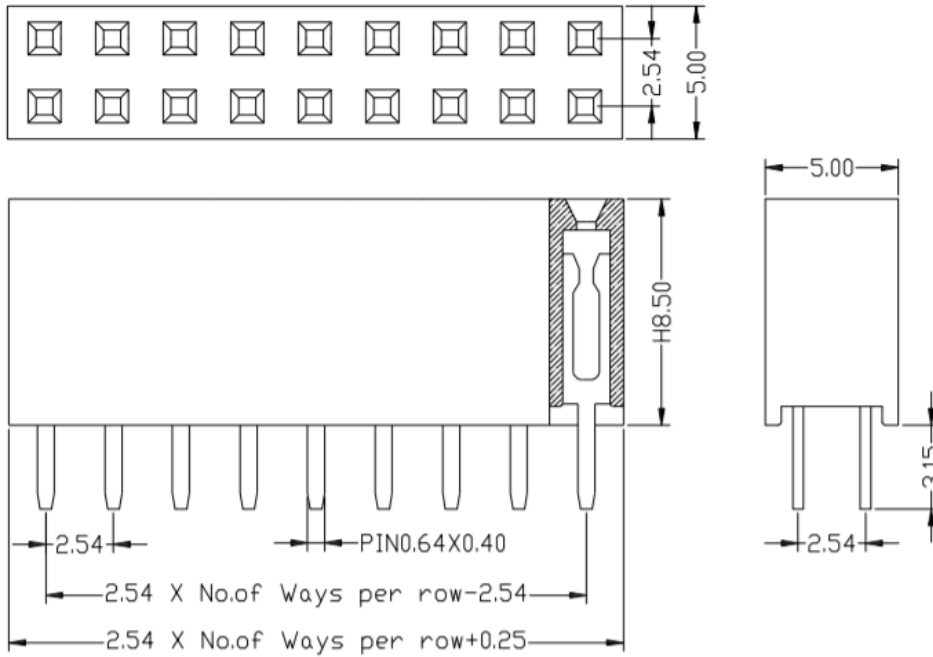
Description

The SSH2000-XX is a Dual row socket header with 2.54 mm pitch. The connector is available up to 80 contacts.

SSH2000-XX, Dual row socket header, 2.54 mm pitch

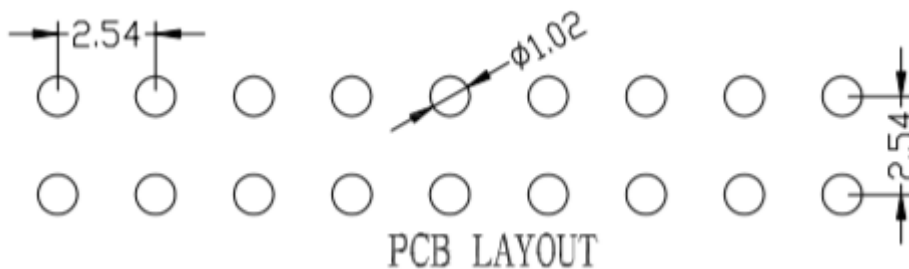
Dimensions

*unit: mm



PCB footprint

*unit: mm



Ordering information

Ordering can be done via www.summit-electronics.com or via info@summit-electronics.com. Please contact us for more information. Customisation of the product is available on request.

Technical support

For all product questions please contact us via info@summit-electronics.com